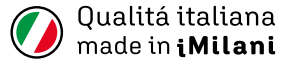




| **art**
collection



iMilani



Qualità italiana
made in **Milano**

*"Art cannot be separated from life. It is the expression of the greatest necessity of which life is capable."
Robert Henri, The Art Spirit, 1923*

| **art** collection

In a society victim of globalization and a system that tends to eliminate time, we increasingly seek the need to rethink the fruit of our work, rediscovering in it that **human creative value** without which it would cease to exist.

Combining the functionality of the product with the aesthetic pleasure of art, Art Collection was born from the need to raise the value of the simple product giving it back that human creativity that is often overridden by the daily frenzy of the market.



| art collection



Art Collection is a kind of 'lateral thinking': the ability to think creatively 'outside the box', ascribing to the creation of the design its primordial value.

Art Collection was created to pay homage to a century that accelerated the artistic revolution by defining Contemporary Art. A journey between art and design that transforms the simple need to contain into an experience that engages both sight and mind, enhancing the object.

Art Collection includes a series of modular cases, whose components acquire the key colors that have distinguished the most representative works of the greatest artists of the 20th century. The color combinations have been applied to the product with extreme care to balance its strength, enhance the nuances, and outline a specific character for each object. Each create has a different soul and aesthetic; it tells a different and unique story.



PIET MONDRIAN

Amersfoort, March 7, 1872 – New York, February 1, 1944

Neoplasticism

Neoplasticism emerged in the Netherlands in 1916 thanks to the formation of the De Stijl group, composed of painters Doesburg, Mondrian and Van Der Leek, the architect Oud and the poet Kok. The artistic movement is characterised by the search for the rationality and purity of things, using pure monochrome colours and abstract and essential geometric shapes.

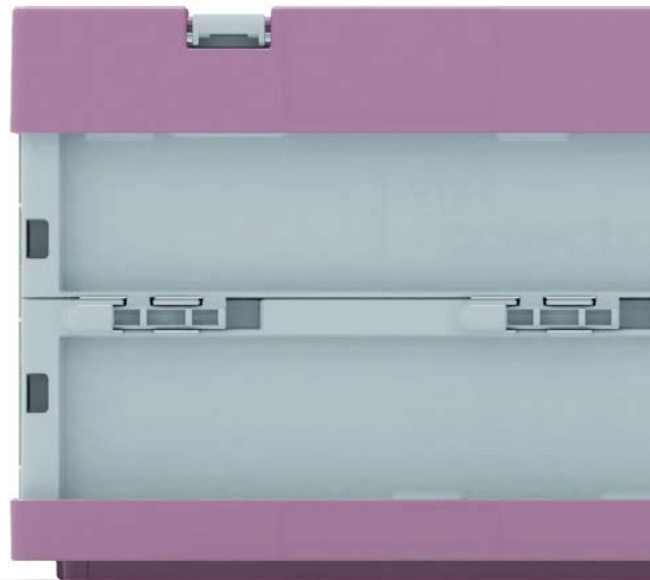


EDVARD MUNCH

Løten, December 12, 1863 – Oslo, January 23, 1944

Expressionism

Expressionism was born in 1905 in Germany as a powerful and dramatic outcry, a liberation of the individual's interiority. Expressionist artists privilege the emotional aspect of reality, representing the contradictions, hopes, and pain of their existence. Among the most prominent exponents are Edvard Munch, Henri Matisse, Ernst Kirchner, Erich Heckel, and Emil Nolde.



| **art**
collection



CLAUDE **MONET**

Parigi, November 14, 1840 – Giverny, December 5, 1926

Impressionism

Impressionism developed in 19th century in France as a need to represent reality, mutable and never equal to itself. Artists painted in the open air (en plein air), with rapid, seemingly imprecise touches of colour to represent the effects of light on nature, constantly evolving. Major exponents include Claude Monet, Pierre-Auguste Renoir, Edgar Degas, Camille Pissarro, Edouard Manet.



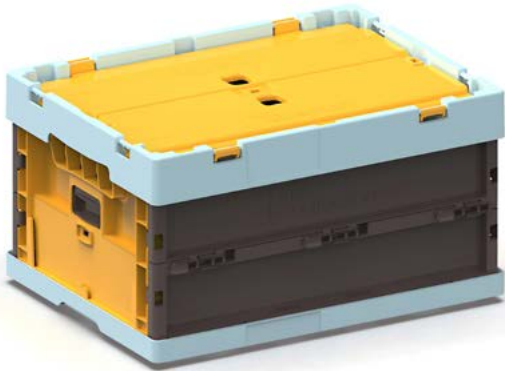
EDWARD HOPPER

Nyack, July 22, 1882 – Manhattan, May 15, 1967

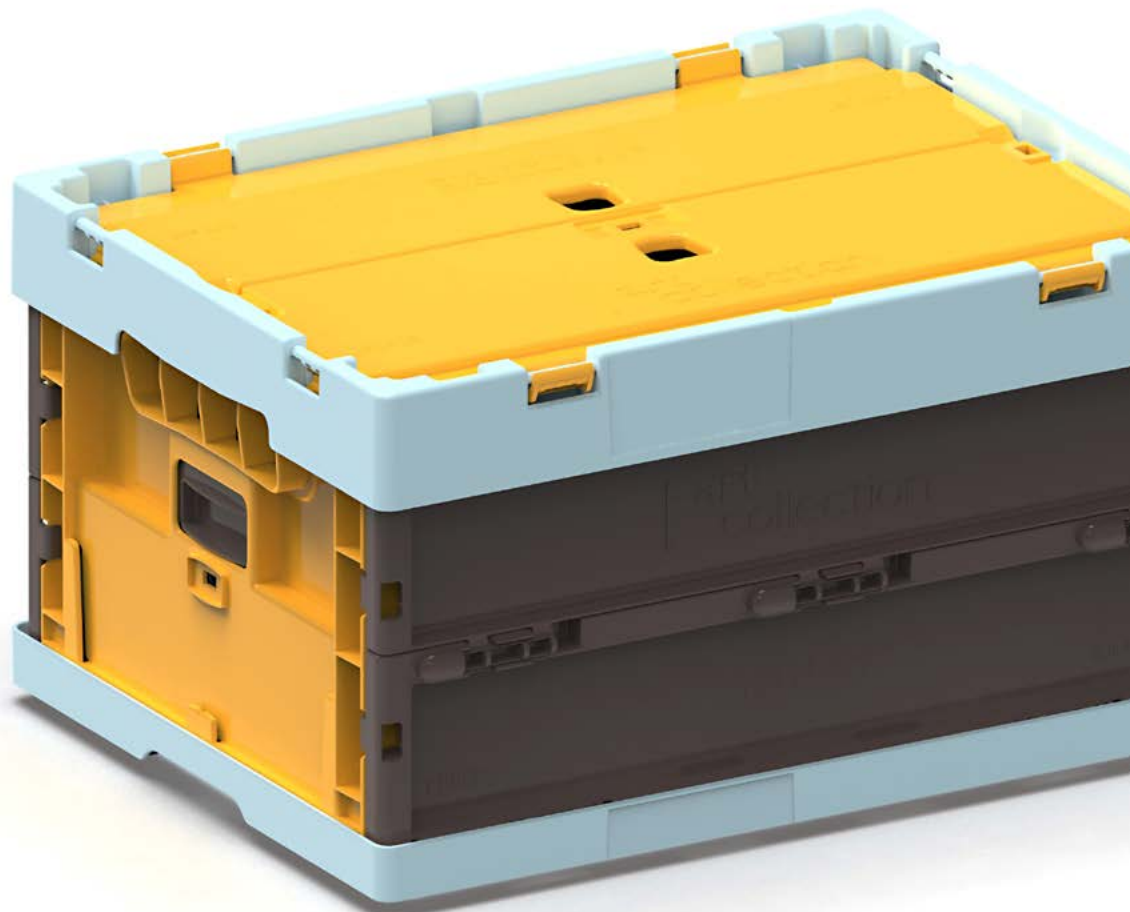
Realism

Realism depicts social reality; it tells the life of ordinary people and describes their everyday intimate and humble aspects in an objective and realistic manner.

Born in France between 1830 and 1880 with Courbet, Millet and Manet as major exponents, it is stated that from the early 1900s in America, thanks also to European immigration and with the contribution of Hopper, Burchfield, and Wood, it became a kind of social denunciation.



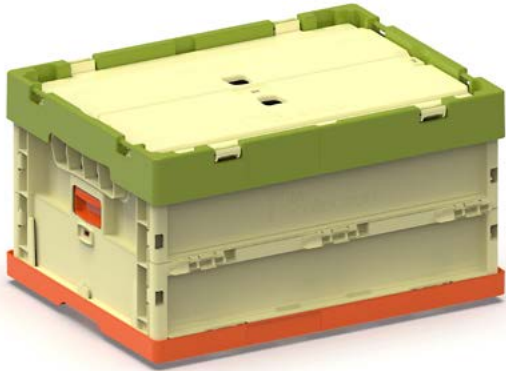
| **art**
collection





GIORGIO DE CHIRICO

Volo, July 10, 1888 – Roma, November 20, 1978



Metaphysical Painting

Metaphysical painting encompasses a way of representing reality that moves away from immediate perception and leaves space for discovery, surprise and emotion. It does not translate into an actual movement but into a tendency of Italian painting at the end of the 20th century to go beyond the physics of space and time, to identify with a reality suspended between silence and stillness.

The main exponents are De Chirico, Morandi and Savinio.

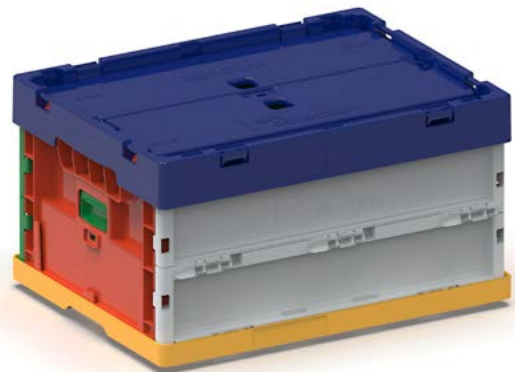


KAZIMIR SEVERINOVİČ MALEVIČ

Kiev, February 23, 1879 – Leningrad, May 15, 1935

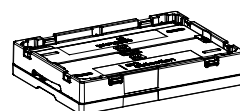
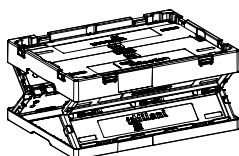
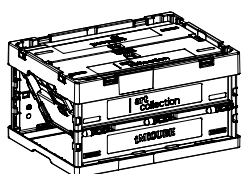
Suprematism

Suprematism is an artistic movement conceived in Russia in 1913 by Kazimir Malevič that expresses the world of nonrepresentation, an art free from aesthetic ends, a combination of simplified geometric elements, conceived as the supreme essence of art. Together with Malevič, among the most significant exponents are O. Rozanova and El Lissitzky.



art collection

Foldable box



AC4322MND



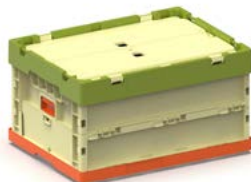
AC4322MNC



AC4322MNT



AC4322HPR



AC4322DCO



AC4322MLV

Open dimensions	400 x 300 x 220 H mm	Usable stacked height / with lid	202 mm / 202 mm
Closed dimensions	400 x 300 x 80 H mm	Usable internal dimensions	354 x 256 x 216 H mm
Stacked edge height open	212 mm	Number of stackable boxes	8
Stacked edge height closed	72 mm	Capacity	15 kg

iMilani
innovative
italian
ideas

iMilani srl - SB

Via Capitano Alessio, 109
36027 Rosà (VI) - Italy

Tel +39 0424 583100
art@imilani.it
www.imilani.com

A brand of:
i'M

